

II Fêtes

Animé et très rythmé

1^{re} et 2^e FLÛTES

3^e FLÛTE

2 HAUTBOIS

1 COR ANGLAIS

2 CLARINETTES sib

1^{er} et 2^e BASSONS

3^e BASSON

1^{er} et 2^e CORS À PISTONS
EN FA

3^e et 4^e CORS À PISTONS
EN FA

1^{er} et 2^e TROMPETTES À PISTONS
EN FA

3^e TROMPETTE À PISTONS
EN FA

1^{er} et 2^e TROMBONES

3^e TROMBONE
ET TUBA

1^{re} HARPE

2^e HARPE

TIMBALES

CYBALES

TAMBOUR MILITAIRE (plus loin)

Animé et très rythmé

Div.

ff très marqué

ff très marqué

VIOLONS

ALTOS

VIOLONCELLES

CONTREBASSES

COR ANG.

Musical staff for COR ANG. (English Horn). The staff contains a melodic line with eighth and sixteenth notes. Dynamics include *f* and *ff*.

CL.

Musical staff for CL. (Clarinets). The staff contains a melodic line with eighth and sixteenth notes. Dynamics include *f* and *ff*.

1^{er} et 2^e BOIS

Musical staff for 1^{er} et 2^e BOIS (Woodwinds). The staff shows sustained notes with dynamics *f* and accents (>).

CORS

Musical staff for CORS (Horns). The staff shows sustained notes with dynamics *f* and accents (>).

1^{er} et 2^e TROMP.

Musical staff for 1^{er} et 2^e TROMP. (Trumpets). The staff contains a melodic line with dynamics *f*.

Musical staff for 1^{er} et 2^e TROMP. (Trumpets). The staff shows chords with dynamics *f* and accents (>).

Musical staff for 1^{er} et 2^e TROMP. (Trumpets). The staff shows chords with dynamics *f* and accents (>).

1^{re} et 2^e FL



HAUTB.



COR ANG.



CL.



1^{er} et 2^e BONS



CORS



1^{re} et 2^e TROMP.



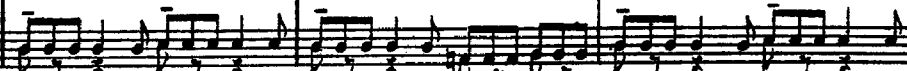
Div.



Div.



Div.



1^{re} et 2^e FL.

1

HAUTB.
CL.
1^{er} et 2^e BONS

Div.
Unis.
Unis.

1^{re} et 2^e FL.

HAUTB.
COR ANG.
CL.
1^{er} et 2^e BONS
3^e et 4^e CORS (Bouché)

à 2
p cre - scen -

Div.
Unis.
Unis.

1^{re} et 2^e FL.

retenu - - -

HAUTB. - scen - - - do

COR ANG. - scen - - - do

CL. - scen - - - do

BONN. - do - - - *f* - - - *ff*

1^{er} et 2^e CÔRS (cuivrez) - - - *f* - - - *ff*

TROMP. - - - *ff*

TROMB. - - - *ff*

TIMB. - - - *ff*

- scen - - - do

- scen - - - do

- scen - - - do

- scen - - - do

- scen - - - do

Unis. - - - *ff*

retenu - - -

COR ANG.

A tempo

2 Un peu plus animé

CL.

Changez en LA

BONK

TROMP.

TROMB.

1^{re} HARPE

(glissando) *f*

2^e HARPE

(glissando) *f*

TIAMB.

CYMB.

A tempo

2 Un peu plus animé

pizz.

sfz

pizz.

sfz

pizz.

sfz

pizz.

sfz

1^{re} et 2^e FL.

8

HAUTB.

COR ANG.

CL.

BONS

CORS

TIMB.

Div. arco

Div. arco

Div. arco

Div. arco

1^{re} et 2^e FL.

Musical staff for 1^{re} et 2^e FL. in G major, 3/4 time. The staff contains a melodic line with a fermata over the first measure.

HAUTB.

Musical staff for HAUTB. in G major, 3/4 time. The staff contains a melodic line with a fermata over the first measure.

COR ANG.

Musical staff for COR ANG. in G major, 3/4 time. The staff contains a rhythmic accompaniment of eighth notes, starting with a piano (*p*) dynamic.

CL.

Musical staff for CL. in G major, 3/4 time. The staff contains a rhythmic accompaniment of eighth notes, starting with a piano (*p*) dynamic.

Musical staff for BOIN. in G major, 3/4 time. The staff contains a rhythmic accompaniment of eighth notes, starting with a piano (*p*) dynamic.

BOIN

Musical staff for BOIN. in G major, 3/4 time. The staff contains a rhythmic accompaniment of eighth notes, starting with a piano (*p*) dynamic.

3^e et 4^e CORS

Musical staff for 3^e et 4^e CORS. The staff contains a few notes in the first measure, followed by rests.

TIMB.

Musical staff for TIMB. in G major, 3/4 time. The staff contains a rhythmic accompaniment of eighth notes.

Musical staff for Violin I. in G major, 3/4 time. The staff contains a rhythmic accompaniment of eighth notes, starting with a piano (*p*) dynamic and a pizzicato (*pizz.*) instruction.

Musical staff for Violin II. in G major, 3/4 time. The staff contains a rhythmic accompaniment of eighth notes, starting with a piano (*p*) dynamic and a pizzicato (*pizz.*) instruction.

Musical staff for Viola. in G major, 3/4 time. The staff contains a rhythmic accompaniment of eighth notes, starting with a piano (*p*) dynamic and a pizzicato (*pizz.*) instruction.

Musical staff for Cello. in G major, 3/4 time. The staff contains a rhythmic accompaniment of eighth notes.

Musical staff for Double Bass. in G major, 3/4 time. The staff contains a rhythmic accompaniment of eighth notes.

1^{re} et 2^e FL.

8

5

HAUTE.

à 2

COR ANG.

CL.

BASS

CORS

TIMB.

à 2

très marqué

f très marqué

f très marqué

3

arco

mf

arco

mf

arco

mf

mf

COR ANG.

Musical score for various instruments. The score is divided into systems. The first system includes COR ANG. and CL. The second system includes BOUS and CCRS. The third system includes Div. and pp. The fourth system includes p expressif. The score is written in treble and bass clefs with various musical notations including notes, rests, and dynamics.

1^{re} et 2^e FL. *p*

HAUTB. *p*

COR ANG. *p*

CL. *pp*

BASS. *pp*

BONS *pp*

3^e COR *p*

Div. pizz. *p*

Div. pizz. *pp*²

Div. pizz. *pp*

pizz. *pp*

This musical score page features ten staves. The top two staves are for Flutes (FL.), the third for Horns (HAUTB.), the fourth for Clarinet (CL.), and the fifth for the first and second Bassoons (1^{er} et 2^e BOIS). The sixth staff is for Horns (CORS), with a 4^o marking. The seventh and eighth staves are for Violins (Div. arco), and the ninth and tenth staves are for Violas (Div. arco). The score includes various musical notations such as dynamics (p, dim.), articulation (accents), and performance instructions (arco, Div.).

1^{re} et 2^e FL.

5

HAUTB.

COR ANG.

CL.

BONS

3^e et 4^e CORS

1^{re} et 2^e TROMP.

Div.

5

Unis.

Unis.

arco

cre - - - scen - - - do

3

mf sempre cresc.

2^o

cre - - - scen - - - do

3

mf sempre cresc.

mf

mf sempre cresc.

mf sempre cresc.

mf sempre cresc.

cre - - - scen - - - do

cre - - - scen - - - do

cre - - - scen - - - do

mf

mf

mf

mf

mf

1^{re} et 2^e FL.

HAUTB.

COR ANG.

CL.

BOIS

3^e et 4^e CORS

molto cresc.

molto cresc.

molto cresc.

molto cresc.

molto cresc.

molto cresc.

molto cresc.

molto cresc.

molto cresc.

molto cresc.

molto cresc.

6

FL.

HAUTB.

COR ANG.

CL.

BASS

CORS

TIMB.

6 Div. par 3.

pp

Div. par 3.

pp

Div.

pp

pp

pizz.

pp

Detailed description: This page of a musical score contains measures 6 through 9. The top section features woodwind and percussion parts. The woodwinds include Flute (FL.), Oboe (HAUTB.), English Horn (COR ANG.), Clarinet (CL.), Bassoon (BASS), and Cor Anglais (CORS). The percussion part (TIMB.) is shown in the bottom staff of this section. Measures 6-9 show various melodic lines and textures. Measure 6 includes dynamics like *p* and *pp*, and markings such as *à 2* and *3*. Measure 7 has a *pp* dynamic. Measure 8 features a *pp* dynamic and a *Div. par 3.* marking. Measure 9 includes a *pp* dynamic, a *pizz.* marking, and another *pp* dynamic. The bottom section of the page shows a dense texture of chords and arpeggios, with *pp* dynamics and *Div. par 3.* markings.

1^{re} et 2^e FL.

pp

HAUTB. à 2

p *expressif (un peu en dehors)*

COR ANG.

p *expressif (un peu en dehors)*

CL.

à 2

p

1^{er} et 2^e BOIS

à 2

p

2^o

p

CORS

4^o

p

10

p

3^o

p

TIMB.

pp

pp

pp

pp

Unis.

tr

pp

pp

Div.

p

pizz.

pp

p *expressif e cresc.*

CL.

p *expressif e cresc.*

BOUS

p

(Bouchez et cuivrez)

CORS

(Bouchez et cuivrez)

TIMB.

p *cresc.*

p *cresc.*

p *cresc.*

p *cresc.*

arco

p *cresc.*

(arco)

p *cresc.*

1^{re} et 2^e FL.

Musical staff for 1^{re} et 2^e FL. with treble clef, key signature of two sharps, and various rhythmic patterns including triplets.

HAUTB.

Musical staff for HAUTB. with treble clef, key signature of two sharps, and rhythmic patterns including triplets.

COR ANG. 3

Musical staff for COR ANG. 3 with treble clef, key signature of two sharps, and rhythmic patterns including triplets.

CL.

Musical staff for CL. with treble clef, key signature of two sharps, and rhythmic patterns including triplets.

BONS

Musical staff for BONS with bass clef, key signature of two sharps, and long notes.

CORS

Musical staff for CORS with treble clef, key signature of two sharps, and long notes.

TIMB.

Musical staff for TIMB. with bass clef, key signature of two sharps, and rhythmic patterns.

Changez en La b Mi b

Musical staff with treble clef, key signature of one sharp, and rhythmic patterns.

Musical staff with treble clef, key signature of one sharp, and rhythmic patterns.

Musical staff with treble clef, key signature of one sharp, and rhythmic patterns.

Musical staff with treble clef, key signature of one sharp, and rhythmic patterns.

Musical staff with treble clef, key signature of one sharp, and rhythmic patterns.

Musical staff with treble clef, key signature of one sharp, and rhythmic patterns.

Musical staff with bass clef, key signature of one sharp, and long notes.

p

9

1^{re} et 2^e FL.

molto cresc.

HAUTB.

molto cresc.

COR ANG.

molto cresc.

CL.

molto cresc.

molto cresc.

BOUS

molto cresc.

molto cresc.

CORS

molto cresc.

9

arco

molto cresc. très expressif

molto cresc.

molto cresc.

molto cresc.

Unis

molto cresc.

Div.₃
f
Div.₃
f
Div.₃
f
f

10

Modéré mais toujours très rythmé

TRUMP. (Sourdises) *pp*

1^{re} HARPE *ppp*

2^e HARPE *ppp*

TIMB. *ppp*

Detailed description: This system contains four staves. The top two staves are for Trumpets (Sourdises) in 2/4 time, marked *pp*. The third and fourth staves are for Harps (1^{re} and 2^e HARPE) in 2/4 time, marked *ppp*. The harp parts feature a rhythmic accompaniment of eighth notes with long slurs. The timpani part (TIMB.) is on a single staff below the harps, marked *ppp*, playing a rhythmic pattern of eighth notes.

10

Modéré mais toujours très rythmé

vclle *pp*

Div. *pp*

pizz. *pp*

Div. *ppp*

pizz. *ppp*

Detailed description: This system contains five staves. The top three staves are empty. The fourth and fifth staves are for Violins (vclle) in 2/4 time, marked *pp*. The fourth staff includes markings for *pizz.* and *Div.*. The fifth staff includes markings for *pizz.* and *pp*. Below these are two more staves, both marked *ppp*, with the top one including *Div.* and *pizz.* markings. The bottom-most staff is marked *ppp*.

Musical score for Trompe, Harpe, and Timbale. The score is written for Trompe (Trombone), 1^{re} Harpe (First Harp), 2^e Harpe (Second Harp), and Timbale (Tympani). The Trompe part features a melodic line with triplets. The Harpe parts provide harmonic accompaniment with sustained chords. The Timbale part has a rhythmic pattern. The score includes a 'Div.' (Divisi) marking for the lower strings.

un peu rapproché

Musical score for Trompe, Harpe, and Timbales. The score is written in a key signature of two flats (B-flat and E-flat) and a 3/4 time signature. The tempo is marked "un peu rapproché".

The score consists of the following parts:

- TROMP.** (Trumpet): Two staves. The upper staff features a melodic line with frequent triplets and slurs. The lower staff provides a rhythmic accompaniment with triplets.
- 1^{re} HARPE** (First Harp): A grand staff (treble and bass clefs) with a complex, arpeggiated accompaniment.
- 2^e HARPE** (Second Harp): A grand staff with a similar arpeggiated accompaniment to the first harp.
- TIMB.** (Timbales): A single bass clef staff with a rhythmic pattern of eighth and sixteenth notes.

The score is divided into measures by vertical bar lines. The first system contains 12 measures, and the second system contains 12 measures. The bottom three staves are mostly empty, indicating that the instruments they represent are silent for the duration of this section.

1^{re} et 2^e FL.

12

pte FL.

HAUTB.

COR ANG.

CL.

BASS.

CORS

TIMB.

12

Unis

1^{er} et 2^e FL.

3^e FL.

HAUTB.

COR ANG.

CL.

BONS

CORS

TROMP.

1^{er} et 2^e TROMB.

3^e TROMB. et TUBA

2 HARPES

TIMB.

CYMB.

TAMB. M.

Div.

13

mf molto cresc.

molto cresc.

molto cresc.

molto cresc.

molto cresc.

molto cresc.

Unis

13

arco

arco

arco

arco

arco

f

8

1^{er} et 2^{es} FL.

HAUTB.

Cl.

1^{er} et 2^{es} CORN

CORS

TROMP.

1^{er} et 2^{es} TROMB.

3^e TROMB. et TUBAS

2 HARPES

TIMP.

CYMB.

TAMB. M.

This page of a musical score is arranged in a multi-staff format. The instruments and parts are as follows:

- 1^{er} et 2^{es} FL.**: Flutes, first and second.
- HAUTB.**: Oboes.
- Cl.**: Clarinet.
- 1^{er} et 2^{es} CORN**: Cornets, first and second.
- CORS**: Horns.
- TROMP.**: Trumpets.
- 1^{er} et 2^{es} TROMB.**: Trombones, first and second.
- 3^e TROMB. et TUBAS**: Trombone and Tubas, third.
- 2 HARPES**: Two Harps.
- TIMP.**: Timpani.
- CYMB.**: Cymbals.
- TAMB. M.**: Tam-tam.

The score includes various musical notations such as notes, rests, and dynamic markings. There are several instances of triplets (marked with a '3') and accents (marked with '>'). The bottom section of the score features a complex rhythmic pattern with many sixteenth notes and triplets, some of which are marked with an '8' above them. The page number '48' is located at the bottom center.

1^{re} et 2^e FL.

HAUTB.

CL.

1^{er} et 2^e BOUS

CORS

TROMP.

1^{er} et 2^e TROMB.

3^e TROMB. et TUBA

2 HARPES

TIMB.

CYMB.

TAMB. M.

8

Detailed description: This is a page of a musical score for a full orchestra and woodwinds. The score is written in a key signature of two flats (B-flat and E-flat) and a 3/4 time signature. It consists of 14 staves. The top staff is for the first and second flutes (1^{re} et 2^e FL.), followed by oboes (HAUTB.), clarinets (CL.), bassoons (1^{er} et 2^e BOUS), horns (CORS), trumpets (TROMP.), trombones (1^{er} et 2^e TROMB.), and tuba (3^e TROMB. et TUBA). The next two staves are for two harps (2 HARPES). The percussion section includes timpani (TIMB.), cymbals (CYMB.), and a snare drum (TAMB. M.). The bottom four staves are for the string section, with a '8' indicating the number of parts. The score features complex rhythmic patterns, including triplets and sixteenth-note runs, and various articulations like accents and slurs. The woodwinds and strings play melodic lines, while the brass and percussion provide harmonic support and rhythmic drive.

1^{re} et 2^e Fl.

HAUTB.

COR ANG.

Cl.

1^{er} et 2^e BOIS

CORS

TROMP.

1^{er} et 2^e TROMB.

3^e TROMB. et TUBA

2 HARPES

TIMB.

CYMB.

TAMB. M.

8

Unis

14

1^o tempo

1^{er} et 2^e FL.

Musical staff for Flutes 1 and 2. The staff contains a melodic line with various note values and rests. A dynamic marking of *pp* is present.

HAUTB.

Musical staff for Oboes. The staff contains a melodic line with various note values and rests. A dynamic marking of *pp* is present.

COR ANG.

Musical staff for English Horns. The staff contains a melodic line with various note values and rests. A dynamic marking of *pp* is present.

CL.

Musical staff for Clarinets. The staff contains a melodic line with various note values and rests. A dynamic marking of *pp* is present.

BOIS

Musical staff for Bassoons. The staff contains a melodic line with various note values and rests. A dynamic marking of *pp* is present.

CORS

Musical staff for Horns. The staff contains a melodic line with various note values and rests.

TRUMP.

Musical staff for Trumpets. The staff contains a melodic line with various note values and rests.

1^{er} et 2^e TROMB.

Musical staff for 1st and 2nd Trombones. The staff contains a melodic line with various note values and rests.

3^e TROMB. et TUBA

Musical staff for 3rd Trombone and Tuba. The staff contains a melodic line with various note values and rests.

TYMB.

Musical staff for Timpani. The staff contains a melodic line with various note values and rests.

TAMB.M.

Musical staff for Muffled Tom-toms. The staff contains a melodic line with various note values and rests.

14

1^o tempo

Musical staff for Flutes 1 and 2. The staff contains a melodic line with various note values and rests.

Musical staff for Oboes. The staff contains a melodic line with various note values and rests.

Musical staff for English Horns. The staff contains a melodic line with various note values and rests.

Musical staff for Clarinets. The staff contains a melodic line with various note values and rests.

Musical staff for Bassoons. The staff contains a melodic line with various note values and rests.

Div.

pp

pp

Div.

pp

1^{re} et 2^e FL.

p

pp

3^e FL.

pp

HAUTB.

p

7 7 x 7

pp

à 2

COR ANG.

p

pp

CL.

p

pp

1^{er} et 2^e BASS

pp

1^{re} et 2^e FL.
 cre - scen - do *f*

1^{re} FL.
 cre - scen - do *f*

HAUTB.
 cre - scen - do *f*

COR ANG.
 cre - scen - do *f*

CL.
 cre - scen - do *f*

BOON
 cre - scen - do *f*

1^{er} et 2^e COR
f

f *expressif et très soutenu*

f *expressif et très soutenu*

Div.
 cre - scen - do *f*

cre - scen - do *f*

cre - scen - do *f*

1^{re} et 2^e FL.

16

pte FL.

HAUTB.

COR ANG.

CL.

BOIS

CORS

TROMP.

1^{er} et 2^e TROMB.

3^e TROMB. et TUBA

16

This page of musical score is for a brass and woodwind ensemble. It contains ten staves of music. The instruments are listed on the left side of each staff: 1^{re} et 2^e FL., pte FL., HAUTB., COR ANG., CL., BOIS, CORS, TROMP., 1^{er} et 2^e TROMB., and 3^e TROMB. et TUBA. The score is written in a key signature of two flats (B-flat and E-flat) and a common time signature (C). The music features a variety of rhythmic patterns, including eighth and sixteenth notes, and rests. Dynamic markings such as *fff* (fortissimo) and *ff* (fortissimo) are used throughout. A rehearsal mark '16' is present at the top right and middle right of the page. The bottom of the page features a large *fff* marking.

1^{re} et 2^e FL.

Même mouv^t

COR ANG.

CL.

BOSS

CORS

TROMP.

CYMB.

TAMB.M.

(baguette de Timb.)

Même mouv^t

Div. ^h

ff

dim. molto

dim. molto

dim. molto

pp

pp

pp

pp

pp

pp

pp

pp

pp

pizz.

pp

pizz.

pp

FL.

HAUTB.

COR ANG.

CL

BOON

CORS

HARPE

TIMB.

CYMB.

TAMB. M.

17

Uois

Fl.

Hautb.

Cor Ang.

Cl.

Bass.

Tromb.

Harpe

Timp.

Cymb.

Tamb. M.

Unis

19

20

21

22

23

mf

p

cre -

cre -

cre -

1^{re} et 2nd FL.

HAUTB.

COR ANG.

CL.

BONS

- scen - - do

CORS

TROMB.

- scen - - do

- - scen - - do

- - scen - - do

- - scen - - do

- - scen - - do

FL.

HAUTS.

COR ANG.

CL.

BOUS

CORNS

TROMB.

19

p

dim.

dim.

This musical score page, numbered 64, features the following parts and markings:

- Bassoon (Bous):** Marked *più p* in the first measure.
- Horns (CORS):** Marked *pp* in the third measure.
- Trumpets (1^{er} et 2^e TROMB.):** Marked *p* in the third measure.
- Trombones and Tuba (3^e TROMB. et TUBA):** Marked *pp* in the third measure.
- Cymbals (CYMB.):** Marked *pp* in the third measure.
- Snare Drum (TAMB. M.):** Marked *p* in the first measure.
- Double Basses:** Marked *p* *dim.* in the third measure.
- Other markings:** *pizz.* and *f* in the double bass part; *Div.* and *pp* in the woodwind parts.

1^{re} 2^e et 3^e FL.

HAUTB. ^{1^o}
 BOUS ^{1^o}
 CORS
 TROMP. *p dim.*
 1^{er} et 2^e TROMB. *p dim.*
 3^e TROMB. et TUBA
 CYMB.
 pizz.
 pizz.
 pizz.
 arco
 arco
pp léger
pp léger

1^{er} et 2^e FL.

a tempo

HAUTB.

COR ANG.

CL.

BOIS

2^o

COR

TAMB. M.

pp

pp

ppp

Cuivrez

Cuivrez

pp

ppp

Cuivrez

Cuivrez

ppp

a tempo

pp

ppp

ppp

pp

pp et toujours en s'éloignant davantage

du bout de l'archet

du bout de l'archet

pp et toujours en s'éloignant davantage

Sourdines

CORS

Sourdines

1^o

3^o

1^{re} TROMP.

Sourdines

p

p

più p

TIMB.

CYMB.

ppp

ppp

ppp

Div. *ppp*

ppp

pizz.

pizz.

ppp

ppp