

ALL ALONE

Words and Music by Gorillaz/R. Smith/S. Tong

$\text{♩} = 147$

Am



G



Musical notation for the first system of the song. It features a vocal line in 4/4 time with lyrics "All a - lone.____" and a piano accompaniment. The piano part consists of a right-hand melody and a left-hand bass line. The key signature is one flat (F major/D minor).

Am



G



1.

2.
N.C.

Musical notation for the second system, including a first ending and a second ending (N.C.). The vocal line and piano accompaniment continue. The piano part includes a right-hand melody and a left-hand bass line.

Am



G



Musical notation for the third system of the song. It features a vocal line with lyrics "All a - lone.____" and a piano accompaniment. The piano part consists of a right-hand melody and a left-hand bass line.

Am

G

Am 5fr

G 3fr

All a - lone. —

All a - lone. —

This system contains the first two measures of the vocal melody. The guitar accompaniment is shown in the piano part below. The first measure is in Am (5fr) and the second is in G (3fr). The lyrics are 'All a - lone.' with a long dash indicating a sustained note.

Am

G

Am 5fr

G 3fr

This system shows the piano accompaniment for the first two measures. The vocal line is silent, indicated by a whole rest in the vocal staff. The piano part consists of a bass line in the left hand and chords in the right hand.

Am

G

Am 5fr

G 3fr

This system shows the piano accompaniment for the next two measures. Similar to the previous system, the vocal line is silent with a whole rest. The piano part continues with a bass line and chords.

Am

G

Am 5fr

G 3fr

Snatch a piece of my pond-er - ing, dis-tant far like yon-der in, skin of my tute like, skin of my boot like,

This system contains the vocal melody for the final two measures. The guitar accompaniment is shown in the piano part below. The first measure is in Am (5fr) and the second is in G (3fr). The lyrics are 'Snatch a piece of my pond-er - ing, dis-tant far like yon-der in, skin of my tute like, skin of my boot like,'.

ALONE

Am

fly in soup like, where's the wait - ress? Can't take this, can't face this, these airs and all these gra - ces,

G

it's my mis-take, I make it. Straight up to the boom I bake it. Bounce wig - gle, bounce wig - gle

G

shak - ing all the pains out. Che - mi - cal cut throats bound_ to blow the brains out.

Am

Hurts to the pain, this ain't no game, I feel no shame, I birth this pain, I

G



twist the cain, I twist a - gain, I push the plain. It's plain as day



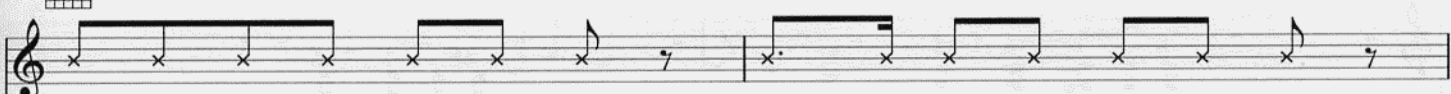
Am



known to what the say - er say, known to what these do - ers do, it's



G



you and who and you know where we a - bout to take it there.



Am



We a-bout to make it clear we hap - py on we lone - some. The lone heart, the beat drum, the



Am
5fr

start the fin - ish. Ten spoon of spin - ach, the soul and spil - lage, the

G
3fr

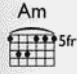
cup that run - neth ov - er, re - turn of the o - gre.


Am
5frG
3fr

All a - lone. All a - lone.

Am
5frG
3fr

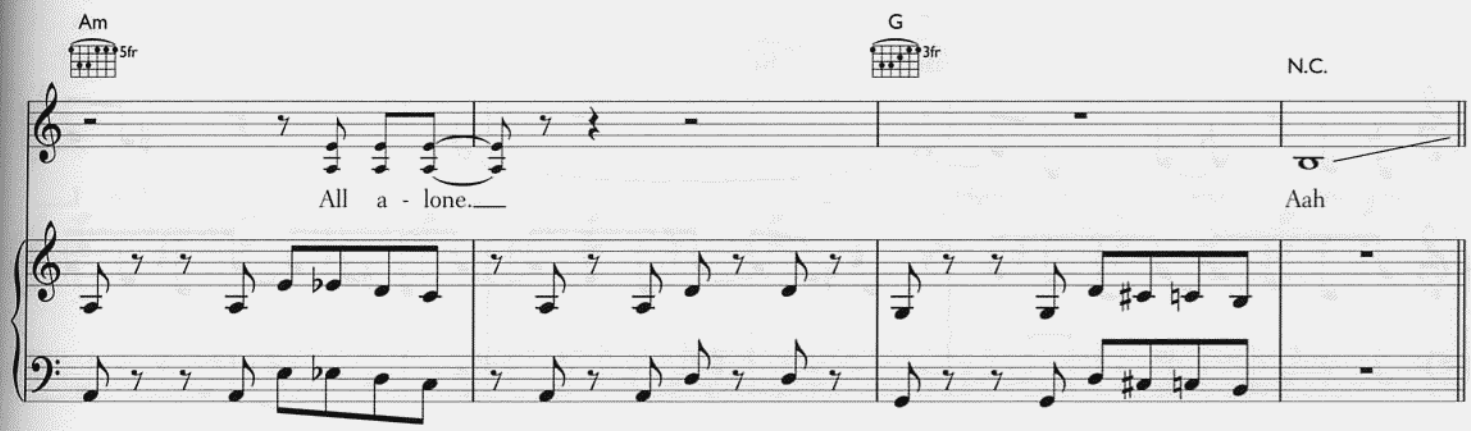
All a - lone. All a - lone.

Am  5fr

G  3fr

N.C.

All a - lone. — Aah




Bm 

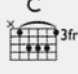
C  3fr

Ped. *Ped.*



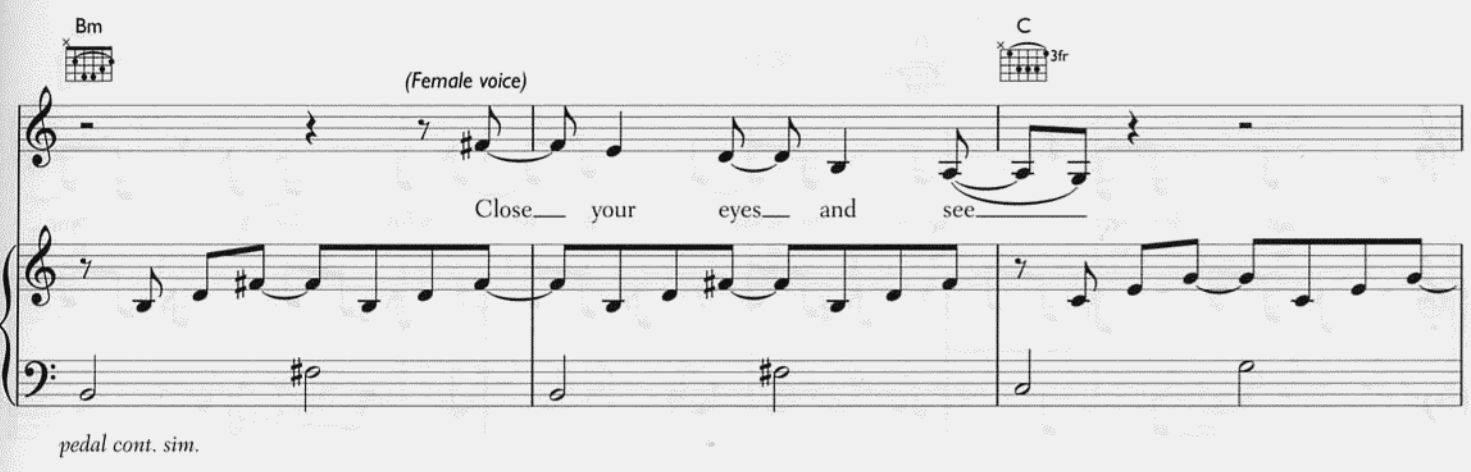
Bm 

(Female voice)

C  3fr

Close — your eyes — and see —

pedal cont. sim.



Bm 

C  3fr

when there ain't no light, — all you'll ev - er be, —



D
x 5fr

come and save the night. Cos I

Detailed description: This system contains the first two measures of the piece. The vocal line starts with a quarter note G4, followed by a quarter note A4, and then a half note B4. The piano accompaniment features a steady eighth-note bass line in the left hand and a more active eighth-note melody in the right hand. A guitar chord diagram for D major (x 5fr) is shown above the staff.

Em A/C# Am
x 7fr x x 5fr

don't need, when the morn - ing comes

Detailed description: This system contains measures 3 through 5. The vocal line has a quarter note G4, a quarter note A4, and a half note B4. The piano accompaniment continues with similar rhythmic patterns. Chord diagrams for Em (x 7fr), A/C# (x), and Am (x 5fr) are provided above the staff.

D
x 5fr

it does - n't seem to say an aw - ful lot to me.

Detailed description: This system contains measures 6 through 8. The vocal line has a quarter note G4, a quarter note A4, and a half note B4. The piano accompaniment features a consistent eighth-note bass line. A guitar chord diagram for D major (x 5fr) is shown above the staff.

Am G
x 5fr x 3fr

Detailed description: This system contains measures 9 through 12. The vocal line has a quarter note G4, a quarter note A4, and a half note B4. The piano accompaniment features a steady eighth-note bass line. Chord diagrams for Am (x 5fr) and G major (x 3fr) are provided above the staff.

WHITE LIGHT

Am



G



Am



G



Am



G



Am



G



All a - lone. —

All a - lone. —

Am 5fr G 3fr

All a - lone. All a - lone.

Detailed description: This system contains the first two measures of the piece. The guitar part is shown in two staves: a treble clef staff with a 5-fret barre on the Am chord and a 3-fret barre on the G chord, and a bass clef staff with a rhythmic accompaniment of eighth notes. The vocal line is in a treble clef staff, with the lyrics 'All a - lone.' appearing under the first and third notes of each measure.

Am 5fr G 3fr

All a - lone. All a - lone.

Detailed description: This system contains the next two measures. The guitar part continues with the same Am and G chords and rhythmic pattern. The vocal line continues with the lyrics 'All a - lone.' and features a melodic line with a slur over the first two notes of each measure.

Am 5fr G 3fr

Detailed description: This system contains the next two measures. The guitar part remains consistent with the Am and G chords. The vocal line continues with the melodic line and slur, with the lyrics 'All a - lone.' still present in the first measure.

Am 5fr N.C.

Detailed description: This system contains the final two measures. The guitar part starts with the Am chord and then moves to 'N.C.' (No Chords) for the remainder of the system. The vocal line concludes with the melodic line and slur, ending with a fermata over the final note.