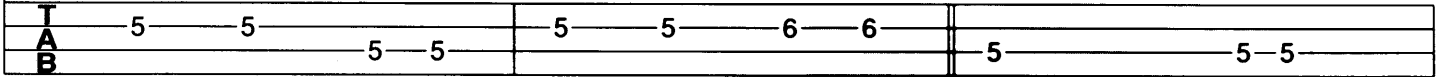
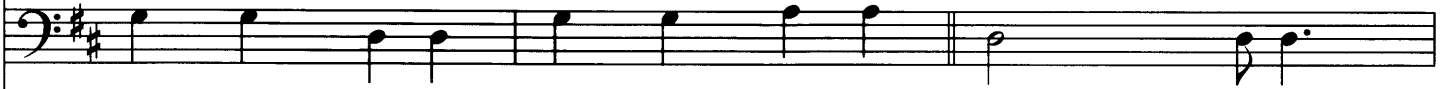


B Verse 2

G D G D D



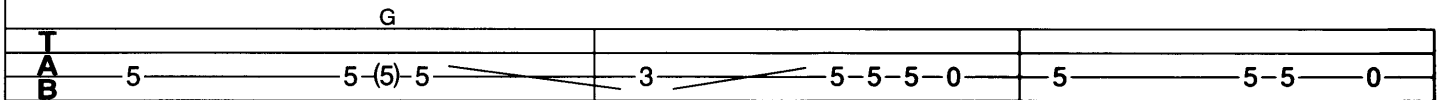
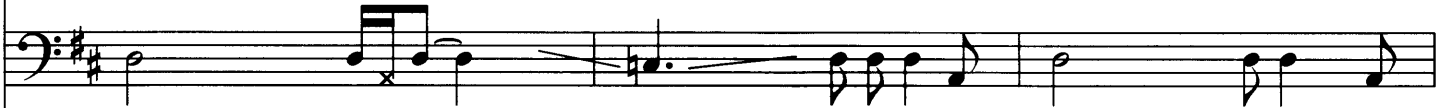
We can work it out. — we can work it out. — Think of what you're say - ing, —



C D



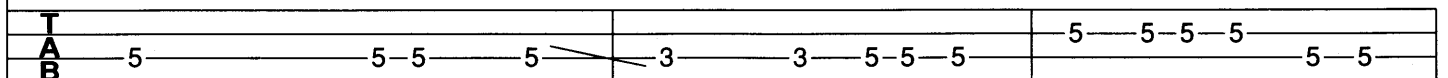
You can get it wrong — and still you think — that it's — al - right, Think of what I'm say - ing, —



C D G D



We can work it out — and get it straight, — or say good - night. — We can work it out. —



C Bridge

G A Bm

We can work it out. _____ Life is ve - ry short, _____ and there's no time, _____

Legato

TAB 5-5-5-7-7 || 9-9-9-7-9-9-7-7-5

Gmaj7 F#sus4 F# Bm Bm7/A Gmaj7 Bm/F#

For fuss - ing and fight - ing, my friend,

TAB 5-5-5-4-4-4-2-0-3-2

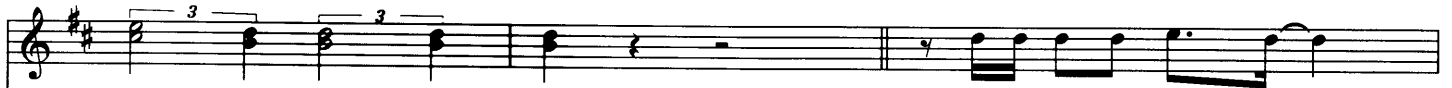
Bm Gmaj7 F#sus4 F#

I have al - ways thought _____ that it's a crime _____ So I will

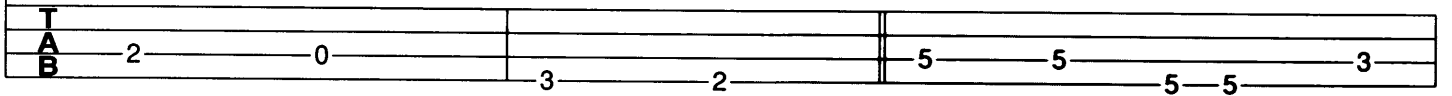
TAB 2-2-2-2-0-1-2-2-0-0-3-3-5-5-3-3-2-2-4-4-2

D Verse 3

Bm Bm7/A G D/F# D



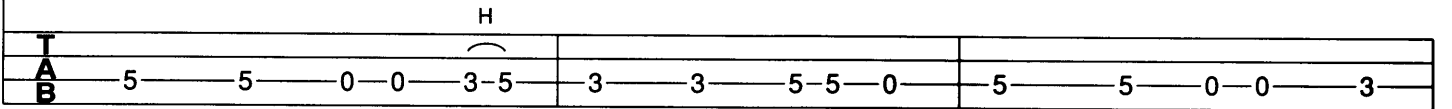
ask you once a - gain. Try to see it my way,___



C D



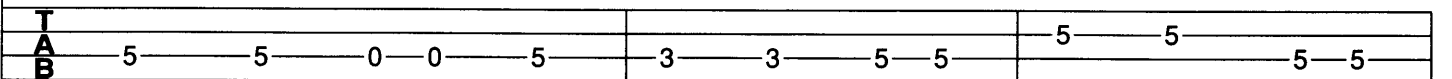
On - ly time will tell if I___ am right or I am wrong. While you see it your way,___



C D G D



There's a chance that we might fall a - part_____ be - fore too long. We can work it out.___



E Middle 2

G A Bm

We can work it out. Life is ve - ry short, and there's no time,

T
A
B

5 5 7 7 | 9 9 9 9 9 | 9 9 7 7

Gmaj7 F#sus4 F# Bm Bm7/A Gmaj7 Bm/F#

For fuss - ing and fight - ing, my friend,

T
A
B

5-5 5-5 | 9-9 9-9 9 | 7 5 3 2

Bm Gmaj7

I have al - ways thought that it's a crime,

T
A
B

2 2 2 2 0 1 | 2 2 2 0 3 | 3 5 5 3 0

F Verse 4

F#sus4
F#
Bm
Bm7/A
G
Bm/F#
D

So I will ask you once a - gain. Try to see it my way,

TAB
 2 2 4 4 2 | 2 0 | 3 2 | 5 5 0 0

C
D

On - ly time will tell if I am right or I am wrong, While you see it your way,

TAB
 5 5 0 0 5 | 3 3 5 5 0 | 5 0 3

C
D
G
D

There's a chance that we may fall a - part be - fore too long. We can work it out.

TAB
 5 0 0 5 | 3 3 5 5 | 5 5 5 5

G
A
D

We can work it out.

TAB
 5 5 7 7 | 0 0 | 0